

Student Arrival Procedures



To help ensure a smooth start to the day, please note the following arrival procedures:

Campus Opening: The front side doors (by the flagpole) will open at 7:10 AM to allow students to receive breakfast and report directly to their classrooms.

Instructional Time: The instructional bell will ring at 7:40 AM, signaling the start of all classroom instruction. Students who are not in class by 7:40 AM will be marked tardy and must sign in at the office.

First Week of Family Drop-Off Procedures:

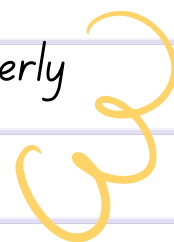


Monday-Wednesday, August 12-14: Families are welcome to walk their child/children to their classrooms on these first three days of school.

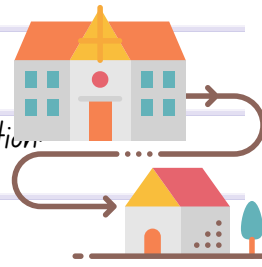
Starting Thursday, August 15: To maintain school security, families must drop their children off at the front side door. From this point, students will proceed to get breakfast and their classrooms under the supervision of our school staff.



Thank you for your cooperation in helping us create a safe and orderly environment for all students.



Student Dismissal Procedures



As we prepare for a successful school year, please take note of the following dismissal information.

Monday: Dismissal begins at 12:55 PM.

Tuesday - Friday: Dismissal begins at 1:55 PM.



Car Riders:

All cars must display a car tag with the student's first and last name, as well as their grade level. Please stop by the office to show proper identification and receive a car line tag.

Starting Monday, August 26, any adult picking up students in cars without a car rider tag will need to park and enter the office to show identification and receive a new tag before picking up the student.

Note: Students must be picked up by a car; walk-ups are not permitted in the car line.

Bus Riders:

All bus riders must have a bus pass. Please visit the office to find out about bus routes and to obtain a bus pass.

YMCA & Daycare:

Please notify the front office with the name of the daycare your child will be attending.

If you would like information regarding YMCA, please click the YMCA link.

Bike Riders & Walkers:

Monday: Dismissal for bike riders and walkers begins at 1:10 PM.

Tuesday - Friday: Dismissal for bike riders and walkers begins at 2:10 PM.

Kindergarten Students Walking Home:

Must be picked up at the double doors by the bike rack. The adult will need a Kindergarten Walker tag with the student's first and last name, as well as the teacher's name. Please stop by the office to show proper identification and receive a Kindergarten Walker tag.

1st-5th Grade Students Walking Home:

Students will be dismissed to walk home and will not be supervised once they exit campus.

Bike Riders & Walkers General Guidelines:

No Waiting at Walker Area: Students who are walkers are not permitted to wait at the walker area to be picked up.

No Car Pick-Ups Near Walker Dismissal Area: It is not permitted for students who are walkers to be picked up by car near the walker dismissal area at any time.

We appreciate your cooperation in following these procedures to ensure a smooth and safe dismissal process for all students.

