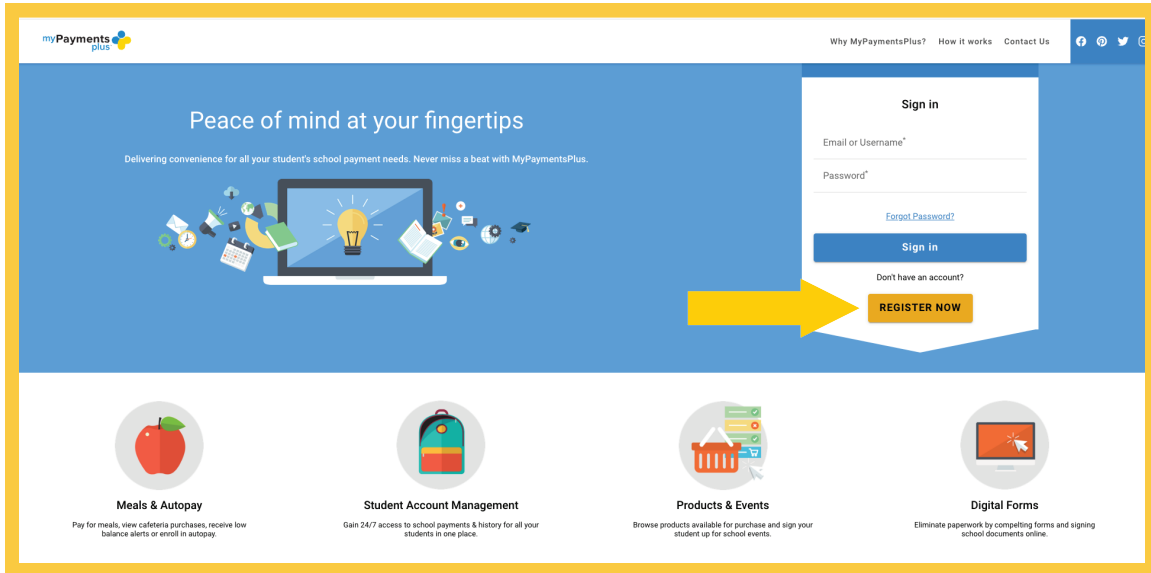
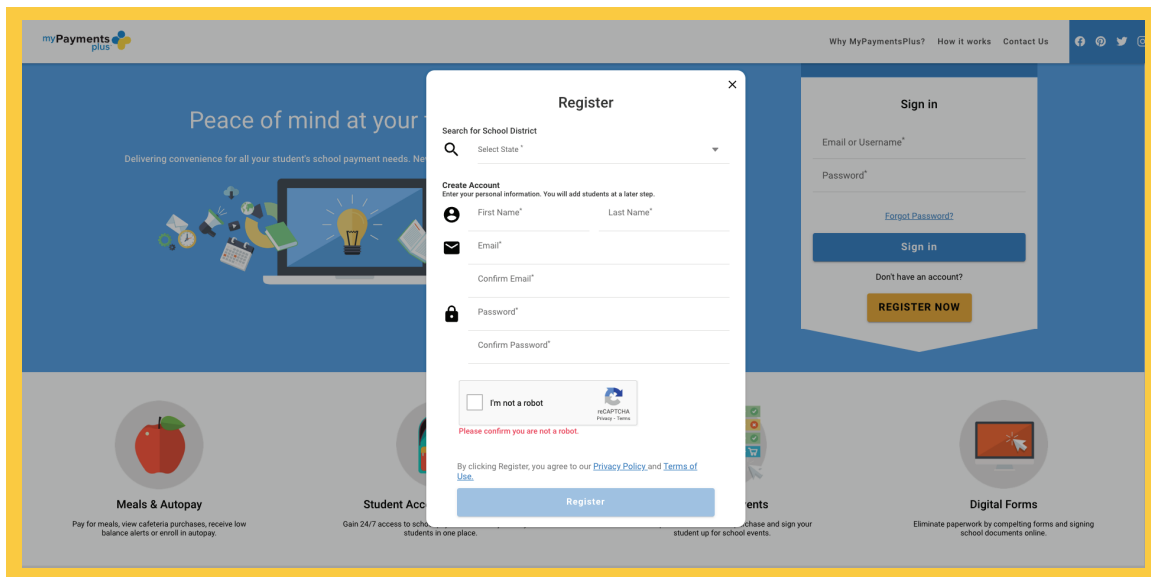


Getting Started With MyPaymentsPlus

Step 1: Visit www.mypaymentsplus.com and click [Register Now](#).



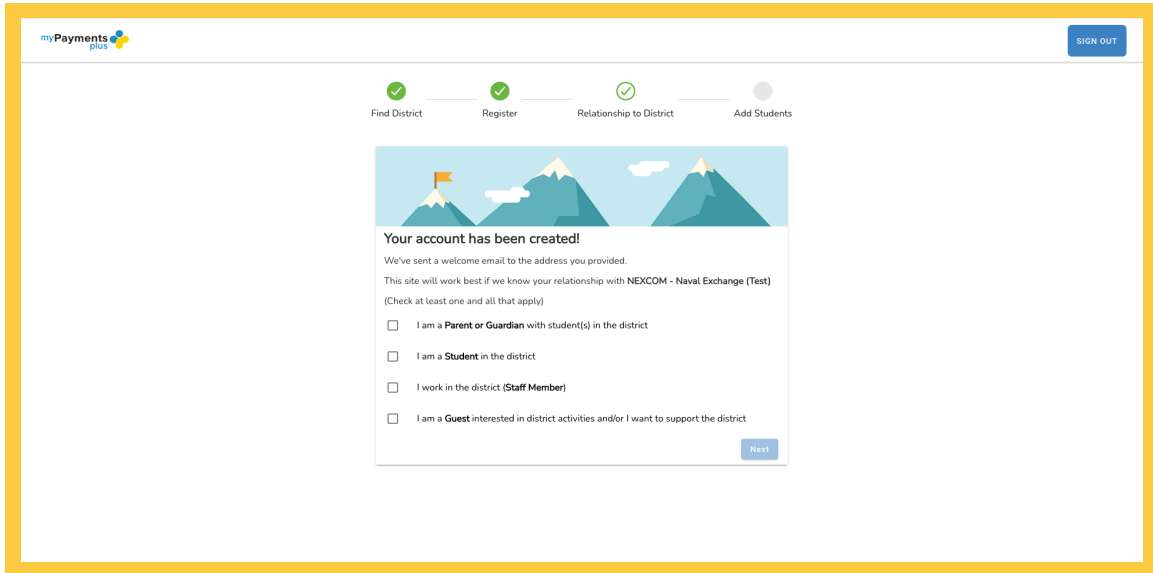
Step 2: Select your [state](#) and [school district](#) from the drop-down menu. Enter your personal information and click [Register](#).



USE OUR LIVE CHAT OPTION!

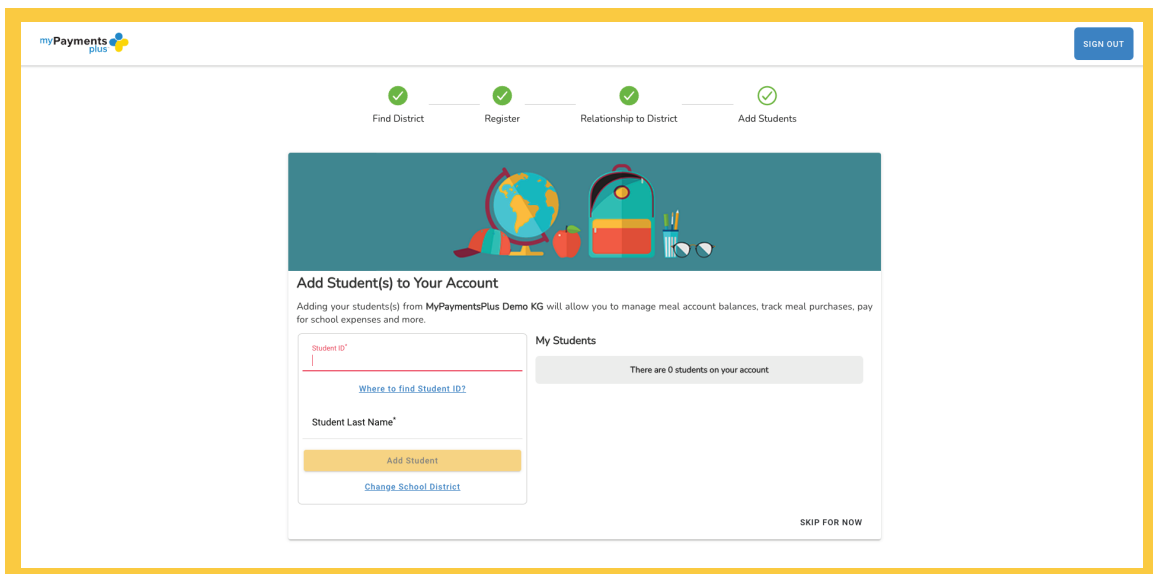
Need Support? Reach out to Us! Parent Phone Support: 877.237.0946 | Parent Email Support: Support@MyPaymentsPlus.com

Step 3: Select the appropriate option and click [Next](#).



The screenshot shows the registration progress bar with four steps: Find District (checked), Register (checked), Relationship to District (checked), and Add Students (unchecked). The main content area features a mountain illustration and the heading "Your account has been created!". Below this, a message states: "We've sent a welcome email to the address you provided. This site will work best if we know your relationship with NEXCOM - Naval Exchange (Test) (Check at least one and all that apply)". There are four radio button options: "I am a Parent or Guardian with student(s) in the district", "I am a Student in the district", "I work in the district (Staff Member)", and "I am a Guest interested in district activities and/or I want to support the district". A "Next" button is located at the bottom right of the form.

Step 4: Using their ID number and last name, add student(s) to your account and click [Done](#).



The screenshot shows the registration progress bar with all four steps: Find District (checked), Register (checked), Relationship to District (checked), and Add Students (checked). The main content area features an illustration of school supplies and the heading "Add Student(s) to Your Account". Below this, a message states: "Adding your student(s) from MyPaymentsPlus Demo KG will allow you to manage meal account balances, track meal purchases, pay for school expenses and more." There are two input fields: "Student ID*" and "Student Last Name*", with a "Where to find Student ID?" link below the first field. An "Add Student" button is located below the input fields, and a "Change School District" link is below it. To the right, a "My Students" section shows "There are 0 students on your account". A "SKIP FOR NOW" link is located at the bottom right of the form.

*The following page does not apply when registering for guest accounts.

USE OUR LIVE CHAT OPTION!