

**Welcome to
MULRENNAN MIDDLE SCHOOL
Home of the Mustangs
*Mustangs are Safe, Respectful and Responsible***



Dear Students,

As the 2024-2025 school year begins, we encourage you to get involved, get engaged, and make the most of this school year.

Your teachers and staff are prepared to help you make this year one that will not only provide you with exciting opportunities, but also one which will help you grow and challenge you to be the best you can be. There are many academic and extra-curricular arenas which are available to you to guide you throughout the school year. We encourage you to get involved in the many meaningful and challenging classes, clubs, and sports while surrounding yourself with positive influences and people who bring out the best in you. Our highly qualified and committed faculty and staff are here to assist you in every area.

This newsletter provides important information for you and your families.

We are glad you are at Mulrennan Middle School, "The Place to Excel." Have a productive and memorable year as you join us on the Stampede to Success!

VISION

To have a successful middle school experience by providing a place to excel.

MISSION

To build positive relationships with our students, teachers and community while providing a safe, caring, and academically challenging environment.

Expected Behavior

The District expects students to conduct themselves in keeping with their levels of development, maturity, and demonstrated capabilities with a proper regard for the rights and welfare of other students and school staff, the educational purpose underlying all school activities, and the care of school facilities and equipment.

Good behavior **helps the school run smoothly, classes be more effective** and everyone be able to stay safe.

2024-2025 School Calendar



Students First Day of School..... Aug 12, 2024
Labor Day /Non Student Day..... Sept 2, 2024
End of 1st Grading Period..... Oct 11, 2024
Non Student Day..... Oct 14, 2024
Veterans Day/Non Student Day..... Nov 11, 2024
Fall Break..... Nov 25 - 29, 2024
Students Return to School..... Dec 2, 2024
End of 2nd Grading Period..... Dec 30, 2024
Winter Break..... Dec 23 - Jan 6, 2025
Students Return to School..... Jan 7, 2025
Martin Luther King , Jr. Holiday..... Jan 20, 2025
Non-Student Day..... Feb 17, 2025
Non-Student Day..... Mar 3, 2025
End of 3rd Grading Period..... Mar 14, 2025
Spring Break..... Mar 17- 21, 2025
Students Return to School..... Mar 24, 2025
Non-Student Day..... Apr 18, 2025
Memorial Day/Non Student Day..... May 26, 2025
**Last Day of School/End of 4th Grading Period
(End of 2nd Semester)..... May 30, 2025**

Please Note:

* Hurricane Day(s) if needed:

Oct. 14, Nov. 11, 25-27 and 29

- Student Early Release Days: Every Monday
- Last day of school is a 2.5-hour early release



Communication Central

Parents may access homework and grades using ParentVue. For assistance with sign-on, please visit our website.

For more information and news about upcoming events concerning Mulrennan please visit our district site at www.hillsboroughschools.org/mulrennan and follow us on Facebook and Instagram.



Athletic Questions and Answers

What kind of sports are offered?

Fall Sports—Boys and Girls Basketball, Volleyball and Track.

Spring Sports—Boys and Girls Soccer and Flag Football.

What are the requirements to play a sport?

- All 7th & 8th grade students must have a 2.0 or higher GPA from the previous semester.
- Student must be promoted from the previous year.
- Student must not be 15 or older by Sept 1st.
- Students are also required to have a weekly conduct report completed by their teachers. A weekly conduct grade of an 'F' in any class will result in the student sitting out of that week's game.

How do I sign up? All paperwork must be completed online through PlanetHS.com prior to the student being allowed to try out.

Do I need a physical? All students interested in trying out for a sport MUST have a sports physical. A copy of the physical must be uploaded into PlanetHS.com prior to tryouts. Sports physicals are good for 365 days and must be signed and dated by a doctor. Physical paperwork must be checked "no limitations".

Are there any fees? Yes, all students are required to purchase school insurance through School Insurance of Florida. A copy of this purchase must be uploaded into PlanetHS.com.

What days and times will practice and games be held? Practice days and times are determined by the coach, and are limited to 1 1/2 hours. Games, times and locations are determined by the district. A schedule will be sent home.

Student Nutrition Services



Breakfast AND Lunch will be served **free** of charge to all students. Extra milk and a la carte items may be purchased separately, the price varies depending on the item. You can pay online through the school district website: www.MyPaymentPlus.com

Checks should be made payable to Mulrennan Middle School Food Service.

Bike Riders

Bikes must be locked and secured while on campus. Bike racks are located in front of the cafeteria or in front of the school. Students must provide their own lock from home to secure their bike.



Helmets are required for all bike riders. It's the law!

Bike riders must walk bikes while on campus.

No skateboards allowed on campus.

Bus Riders

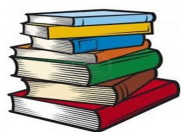
Safety is very important. Students must follow all school bus rules and conduct themselves appropriately. Students must exhibit respectful behavior towards all bus drivers at all times. Buses can only be used by those students who live in the area for the designated bus route. Students will not be given permission to ride other student's buses. Consequences for riding another student's bus will range from work detail to suspension of bus privileges.

Media Center

The Media Center will be open during school.

Students can obtain a pass in the cafeteria to use the Media Center at this time. During school or lunch, students need permission from their teachers to visit the

Media Center. Fines and indebtedness will keep you off all incentive field trips.



Personal Property

All students are responsible for their personal property and students will respect the property of others. The student's name should be written on all books, bags, materials, etc. Only necessary items should be brought to school. Girls may keep their purses with them at all times, except during P.E. Do not wear expensive jewelry or bring a large amount of money to school. Items that should **not** be at school include laser pointers, iPod, Bluetooth devices, AirPods, speakers, electronic games, and toys. When an item is taken from a student, it will remain in the Student Affairs Office and the parent will have to come to the school to pick up the item.



Visitors

Parents and guardians must sign in with the student affairs in the main office where you will be asked to produce your driver's license. The secretary will then give you a pass which must be worn during your visit.

Lunchroom Procedures

1. Upon entering the cafeteria, a teacher will seat you.
2. Remain in your seat until you are called upon to enter the serving area lines.
3. When in the lunch line stay behind the blue tape and wait your turn in a single file line.
4. At the counter only 2 people are allowed to enter their student number at a time.
5. Once you have your food, return to the seat you were originally assigned.
6. Raise your hand if you need assistance or to get out of your seat for any reason. No student is allowed to leave the cafeteria without permission.
7. Clean your table and floor area before leaving.
8. Wait for your teacher to be released

Be respectful and courteous to all!

Dress Code

The dress and grooming of students shall be that which contributes to the health and safety of the individual and which is non-disruptive of the educational activities and processes of a school.

- Shoes shall be worn. Wheeled sneakers and **bedroom slippers** are unacceptable and not allowed.
- Clothing that exposes the entire shoulder, tube tops, spaghetti straps, or similar type of clothing may only be worn with a blouse or shirt. Clothing **exposing the torso or the midriff**, either front, back, or sides shall not be worn. **Underwear shall not be visible.** Clothing shall not expose the mid-chest area. Clothing not properly fastened or with tears that are indecent shall not be worn. Clothing traditionally designed as undergarments or sleepwear (**pajama pants**) shall not be worn as outer garments. All pants and shorts shall be secured at the waist. Boys' shirts shall have sleeves. Mini-skirts, mini-dresses, and short shorts shall not be permitted. **Hemlines shall be no shorter than fingertip length without manipulation.**
- **Head coverings/hats** shall not be worn in the building unless required for religious observance or health-related reasons.
- Garments and/or jewelry that display or suggest sexual, vulgar, drug, gang, weapons, or alcohol-related wording or graphics, or that provoke or may tend to provoke violence or disruption in the school, shall not be worn. Wallet chains shall not be worn.

Dress Code Violations Consequences

Offense #1 Student changes clothes before he/she can go back to class.

Offense #2 Student changes clothes before he/she can go back to class. Parent notified.

Offense #3 Referred to Assistant Principal's office for consequences ranging from Detention to ISS. Parent notified.

The student has 3 options for changing clothes:

1. Change into PE uniform.
2. Have parent bring in a change of clothes.
3. Put on a change of clothes from clothes closet.

Attendance

Regular attendance is an important component for a student to excel. Students are encouraged to attend school every day. **If a student is sick, parents can excuse the absence by calling 651-2100 then press 1 or ext. 500.**

Excessive absences (>4 per 9 weeks) may result in revocation of choice enrollment.

Student Sign-In

A student is tardy when he/she arrives after the beginning of the school day. A student who is tardy to school must be signed in. An excused tardy exists when reasons acceptable to the principal or his or her designee are given.

Excessive tardies (>4 per 9 weeks) may result in revocation of choice hardship.

Sign-Outs

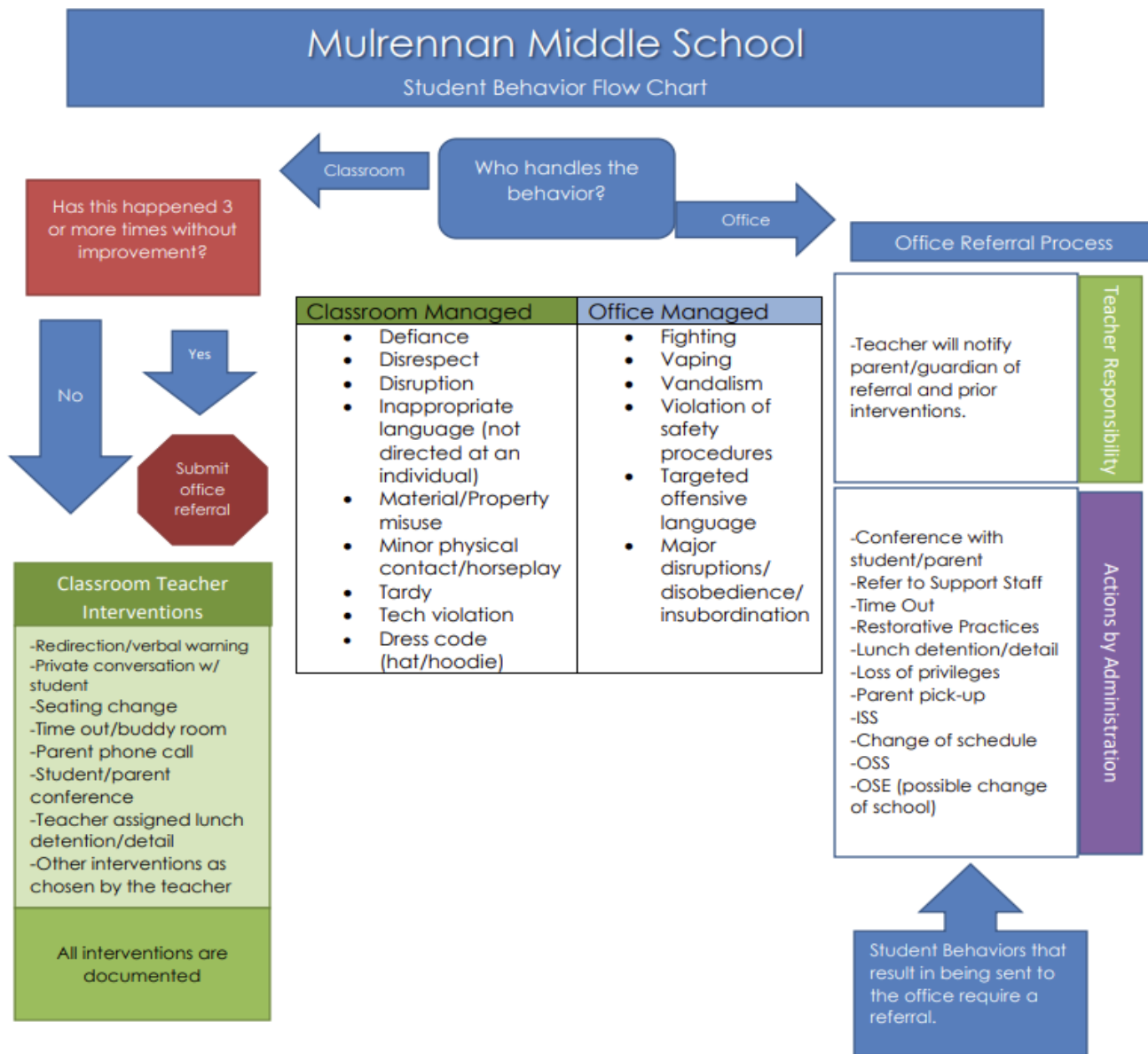
Students leaving school during the day for any reason, must sign-out. Families must provide a picture identification in order to sign out the student. **Sign-outs will not be permitted after 4:00 pm (3:00 pm on Early Release Days).**

Telephone Usage

If a student has an emergency and needs to call their parent, they may do so in the Student Affairs Office. Whenever possible, please make all "special plans" for after-school activities, i.e. staying after for sports, rehearsals, etc. with your child **prior** to sending them to school. Your assistance in this regard helps to minimize classroom interruptions. If your child is already at school and an emergency arises which will change his/her normal travel home, please call Student Affairs as soon as possible.

Do not text/call your student during the school day on their personal device.

Student Behavior Flow Chart



Bullying



Hillsborough County Schools are committed to providing an educational setting that is safe, secure, and free from harassment and bullying for all of its students and school employees. **The District will not tolerate bullying and harassment of any type.**

"Bullying" means systematically and chronically inflicting physical hurt or psychological distress on one or more students or employees. It is defined as any unwanted and repeated written, verbal, or physical behavior, including any threatening, insulting, or dehumanizing gesture, by an adult or student that is severe or pervasive enough to create an intimidating, hostile, or offensive educational environment; cause discomfort or humiliation; or unreasonably interfere with the individual's school performance or participation. "Harassment" means any threatening, insulting, or dehumanizing gesture, use of data or computer software, or written, verbal or physical conduct directed against a student or school employee. **This includes: teasing, threats, intimidation, stalking, physical violence, theft, sexual harassment, religious or racial harassment, public humiliation, destruction of property, cyberbullying, and cyberstalking.** It also encompasses retaliation against a student or school employee and electronically transmitted acts (i.e. internet, social media, email, etc.).

Electronic Use Policy

Maintaining the integrity of the learning environment is our top priority, thus electronic devices are **“away every day”** at Mulrennan during school hours (9:30am - 4:30pm).

Students are permitted to have cell phones in their possession throughout the school day. However, cell phone use is only permitted before students enter campus and after the last bell of the day (4:30pm Tues - Thurs; 3:30pm on Mondays).

Cell Phones, Headphones, Earbuds, Ear pods, and other personal electronic devices are to be **out of sight** during the school day (inside and outside of classrooms; this includes hallways and restrooms). **They will NOT be allowed to be out or visible during transitions or in the classroom.**

Students will be asked to keep cell phones/devices out of sight in a backpack, etc. (**not in a back pocket**). MMS has received laptop carts for every classroom. This eliminates the need for cell phone use for instructional purposes.

During times of state testing and other student evaluations, teachers will request that students remove their cell phone from their possession reducing the possibility of compromised test security.

Display or use of Cell Phones, Headphones, Earbuds, Ear pods, and other electronic devices personal electronic devices without permission will result in the following consequences:

| When can I use my cell phone/electronic device and/or have it out where it is visible? | When does my cell phone/electronic device have to be OUT OF SIGHT? |
|---|---|
| Before entering campus | As soon as enter campus and proceed to holding area and until the bell rings. |
| After the dismissal bell rings | In the hallways, restrooms and during all transitions |
| | During all classes |

1st Offense = Cell phone/device is confiscated. Cell phone/device will be sent to the office. The infraction will be recorded by office personnel. The student may pick up the device at the end of the school day.

2nd Offense = Cell phone/device is confiscated. Cell phone/device will be sent to the office. The infraction will be recorded by office personnel and the family notified. The student may pick up the device at the end of the school day.

3rd Offense = Cell phone/device is confiscated. Cell phone/device will be sent to the office. The infraction will be recorded by office personnel. **The parent must pick up the device in the school office.**

Continued offenses will result in progressive discipline consequences.

From HCPS Student Code of Conduct (revised 7/23/24) [Student Code of Conduct / Overview \(hillsboroughschools.org\)](https://www.hillsboroughschools.org/student-code-of-conduct/overview)

Wireless Communication and Other Electronic Devices

The use of wireless communication devices is always prohibited during the instructional day. Wireless communication devices (WCD) will remain on silent in the student’s backpack, lunchbox, purse, or out of sight while the student is on school property or in attendance at a school function. Use of a device is restricted to before school and after school. Violations of the cell phone policy will be handled in accordance with the Student Code of Conduct and may result in confiscation of said device. At no time shall Hillsborough County Public Schools be responsible for theft, loss or damage to cell phones or other electronic devices brought onto its property. Students shall have no expectation of confidentiality with respect to their use of WCDs on school premises/property. Students may not use a WCD in any way that might reasonably create in the mind of another person an impression of being threatened, humiliated, harassed, embarrassed or intimidated.



Mulrennan Families:

NOW is a great time to start filling out the sports application online. Procedures and instructions can be found online at Athletics / Student Forms (hillsboroughschools.org)

The following requirements must be completed PRIOR to registration of all student-athletes:

- EL2 Physical Form (Page 4 of 4 must be completed which includes: signed, stamped, dated, and cleared without limitations by approved medical personnel. The supplement page may be required.)
- Three (3) required FHSAA Videos (Concussion for Students, Sudden Cardiac Arrest, and Heat Illness Prevention)
(print all three certificates in student-athlete's name, dated after May 15, 2024)
- Purchase Insurance
(print insurance card)

Once all documents are collected and ready for upload, you must complete the online registration for your student-athlete at www.planeths.com

PAPER COPIES ARE NOT ACCEPTED

Below are some of the reasons that forms are **frequently denied**:

1. Video certificates are not in **the student's name**.
2. **Mandatory district insurance** has not been purchased/ receipt of purchase has not been uploaded.
3. **EL2 sports physical paperwork** is not uploaded/ does not have the physician's clinic stamp and date.
4. **Student names** are incorrect/ Parent names have been placed in spots designated for the student's name.

Below are the months each sport will **tentatively** start. **Specific tryout dates and practices will be sent out as we approach each sport.** Normal rule of thumb will be that sports packets are due a week and a half before the tryout date.

Basketball-August Volleyball-October
Track- November Soccer- January
Flag Football- March

If you have any specific questions regarding sports applications, please feel free to reach out to Mrs. Burnett at beverly.burnett@hcps.net.